

# Dear Claudio

CD: H.P.Salentin: All John

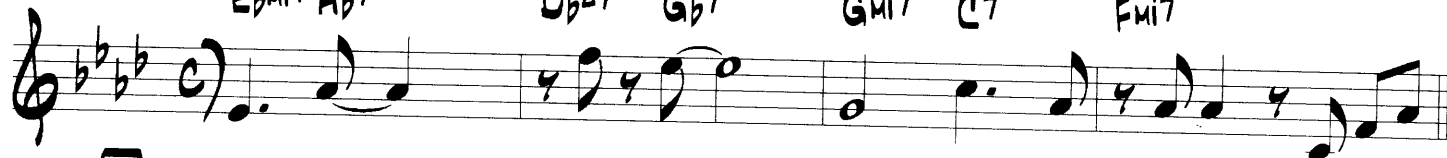
(INTRO)

Latin

E $\flat$ mi7 A $\flat$ 7D $\flat$ 7 G $\flat$ 7

Gmi7 C7

Fmi7



A

D $\flat$ 7

Gmi7(b5)

C7ALT

Fmi7

B $\flat$ mi7

Fmi7

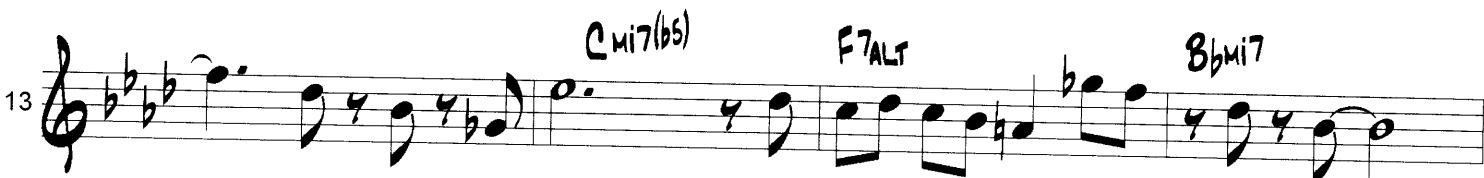
Gmi7(b5)

C7ALT

G $\flat$ 7

Cmi7(b5)

F7ALT

B $\flat$ mi7G $\flat$ 7(b5)

F7ALT

G $\flat$ 7

Cmi7(b5)

F7ALT

B $\flat$ mi7

B

Dmi7

Gmi7

C7

B $\flat$ 7

A7ALT

Dmi7

D7(b9)

Emi7(b5)



29  $E_{mi7}(b5)$   $A7_{ALT}$   $D_{mi7} G7$   $C_{mi7}$

33 **A**  $E_{mi7}$   $A7$   $D_{\Delta7}$   $Bb_{\Delta7}$   $A7_{ALT}$

37  $Db_{\Delta7}$   $G_{mi7}(b5)$   $C7_{ALT}$   $F_{mi7}$

41  $E_{bmi7}$   $A_{b7}$   $Db_{\Delta7}$   $G_{b7}$   $G_{mi7} C7$   $F_{mi7}$

# Dear Claudio

CD: H.P.Salentin: All John

(INTRO)

Latin

F $\flat$ mi7 B $\flat$ 7

E $\flat$  $\Delta$ 7 A $\flat$ 7

A mi7 D7

G mi7

**A**

E $\flat$  $\Delta$ 7

A mi7(b5)

D7<sup>ALT</sup>

G mi7

C mi7

G mi7

A mi7(b5)

D7<sup>ALT</sup>

A $\flat$  $\Delta$ 7

D mi7(b5)

G7<sup>ALT</sup>

C mi7

A $\flat$ 7(b5)

G7<sup>ALT</sup>

A $\flat$  $\Delta$ 7

D mi7(b5)

G7<sup>ALT</sup>

C mi7

**B**

E mi7

A mi7

D7

C $\Delta$ 7

B7<sup>ALT</sup>

E mi7

E7(b9)

F $\sharp$  mi7(b5)

29  $F\#m7(b5)$   $B7^{ALT}$   $E m7 A7$   $D m7$

33 **A**  $F\#m7$   $B7$   $E\Delta7$   $C\Delta7$   $B7^{ALT}$

37  $E_b\Delta7$   $A m7(b5)$   $D7^{ALT}$   $G m7$

41  $F m7$   $B_b7$   $E_b\Delta7$   $A_b7$   $A m7 D7$   $G m7$

# Dear Claudio

CD: H.P.Salentin: All John

(INTRO)

Latin

C $\flat$ mi7 F7

B $\flat$  $\Delta$ 7 E $\flat$ 7

E $\flat$ mi7 A7

Dmi7

A

B $\flat$  $\Delta$ 7

E $\flat$ mi7(b5)

A7 $\Delta$ LT

Dmi7

5

Gmi7

Dmi7

E $\flat$ mi7(b5)

A7 $\Delta$ LT

E $\flat$  $\Delta$ 7

9

A $\flat$ mi7(b5)

D7 $\Delta$ LT

Gmi7

13

E $\flat$ 7(b5)

D7 $\Delta$ LT

E $\flat$  $\Delta$ 7

A $\flat$ mi7(b5)

D7 $\Delta$ LT

Gmi7

17

B

Bmi7

E $\flat$ mi7

A7

21

G $\Delta$ 7

F $\sharp$ 7 $\Delta$ LT

Bmi7

B7(b9)

C $\sharp$ mi7(b5)

25

29  $C\#mi7(b9)$   $F\#7ALT$   $Bmi7$   $E7$   $Ami7$

33 **A**  $C\#mi7$   $F\#7$   $B\Delta7$   $G\Delta7$   $F\#7ALT$

37  $Bb\Delta7$   $E\ mi7(b9)$   $A\ 7ALT$   $Dmi7$

41  $Cmi7$   $F7$   $Bb\Delta7$   $Eb7$   $E\ mi7$   $A7$   $Dmi7$

C-Part  
(Bass-Clef)

comp. by Hans Peter Salentin (GEMA)

# Dear Claudio

CD: H.P.Salentin: All John

(INTRO)

Latin

Ebm7 Ab7 Db7 Gb7 Gmi7 C7 Fmi7

**A**

Db7 Gmi7(b5) C7ALT Fmi7

Bbm7 Fmi7 Gmi7(b5) C7ALT Gb7

Cmi7(b5) F7ALT Bbm7

Gb7(b5) F7ALT Gb7 Cmi7(b5) F7ALT Bbm7

**B**

Dmi7 Gmi7 C7

Bb7 A7ALT Dmi7 D7(b9) Emi7(b5)

Handwritten musical score for bass clef, measures 29-44. The score includes the following chord symbols:

- Measure 29: E mi7(b5), A 7ALT, D mi7, G7, C mi7
- Measure 33: A, E mi7, A7, D delta7, Bb delta7, A 7ALT
- Measure 37: Db delta7, G mi7(b5), C 7ALT, F mi7
- Measure 41: Eb mi7, Ab7, Db delta7, Gb7, G mi7, C7, F mi7