

Invitation

Hans Peter Salentin

T=100
Groovy
Bb-Part

INTRO

Bass & Piano Left Hand play unisono

D[△]

Dm7

D[△]

Dm7



D[△]

Dm7

D[△]

Dm7



C[△]

Cm7

C[△]

Cm7

Bm7

B^bm7



Bm7

A[△]

G[△]

Em7



Bm7

A[△]

G[△]

Em7

A7b9

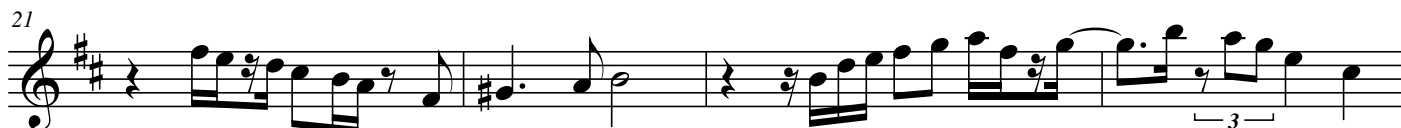


Bm7

A[△]

G[△]

Em7



Bm7

A[△]

G[△]

Em7

A7b9



Bb Part

Invitation

Hans Peter Salentin

2 Solo Start

29

D[△] Dm7 D[△] Dm7 C[△] Cm7 C[△] Cm7

37

D[△] Dm7 D[△] Dm7 C[△] Cm7 C[△] Cm7

45

Bm7 A[△] G[△] Em7

49

Bm7 A[△] G[△] Em7 A7b9

53

Bm7 A[△] G[△] Em7

57

Bm7 A[△] G[△] Em7 A7b9

61

D[△] Dm7 D[△] Dm7 C[△] Cm7 C[△] Cm7

OUTRO

4x

69

D[△] Dm7 C[△] Cm7 B^bm7 A7

FINE

T=100
Groovy
C-Part

Invitation

Hans Peter Salentin

INTRO

Bass & Piano Left Hand play unisono

The musical score for the Intro of 'Invitation' is written in treble clef with a common time signature (C). It consists of seven staves of music. The first four staves are marked with measure numbers 1, 5, 9, and 13. The fifth and sixth staves are marked with measure numbers 17 and 21. The seventh staff is marked with measure number 25. The score includes various chords and melodic lines. The chords are: C Δ , Cm7, C Δ , Cm7, B \flat Δ , B \flat m7, A m7, A \flat m7, A m7, G Δ , F Δ , D m7, A m7, G Δ , F Δ , D m7, G7b9, A m7, G Δ , F Δ , D m7, A m7, G Δ , F Δ , D m7, G7b9. The melodic lines feature eighth and sixteenth notes, often with slurs and accents. There are also some rests and triplet markings.

C Part

Invitation

Hans Peter Salentin

2 Solo Start

29 C^Δ Cm7 C^Δ Cm7 B^bΔ B^bm7 B^bΔ B^bm7

37 C^Δ Cm7 C^Δ Cm7 B^bΔ B^bm7 B^bΔ B^bm7

45 A m7 G^Δ F^Δ D m7

49 A m7 G^Δ F^Δ D m7 G7b9

53 A m7 G^Δ F^Δ D m7

57 A m7 G^Δ F^Δ D m7 G7b9

61 C^Δ Cm7 C^Δ Cm7 B^bΔ B^bm7 B^bΔ B^bm7

OUTRO
4x 69 C^Δ Cm7 B^bΔ B^bm7 A^bm7 G7
A m7

FINE